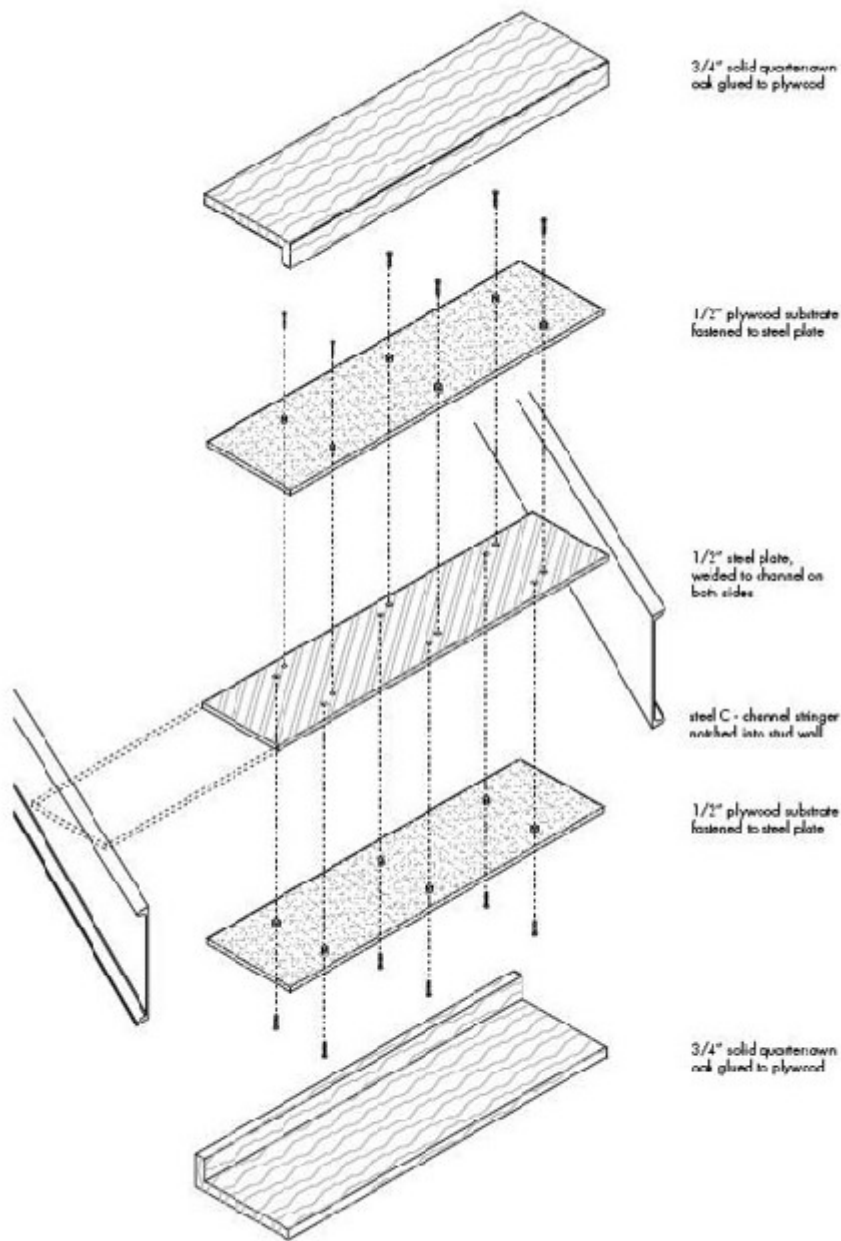


the wind up



The stair's steel stringers are recessed into the millwork and exterior wall.

Brininstool + Lynch

the wind up



The stair's steel stringers are recessed into the millwork and exterior wall.

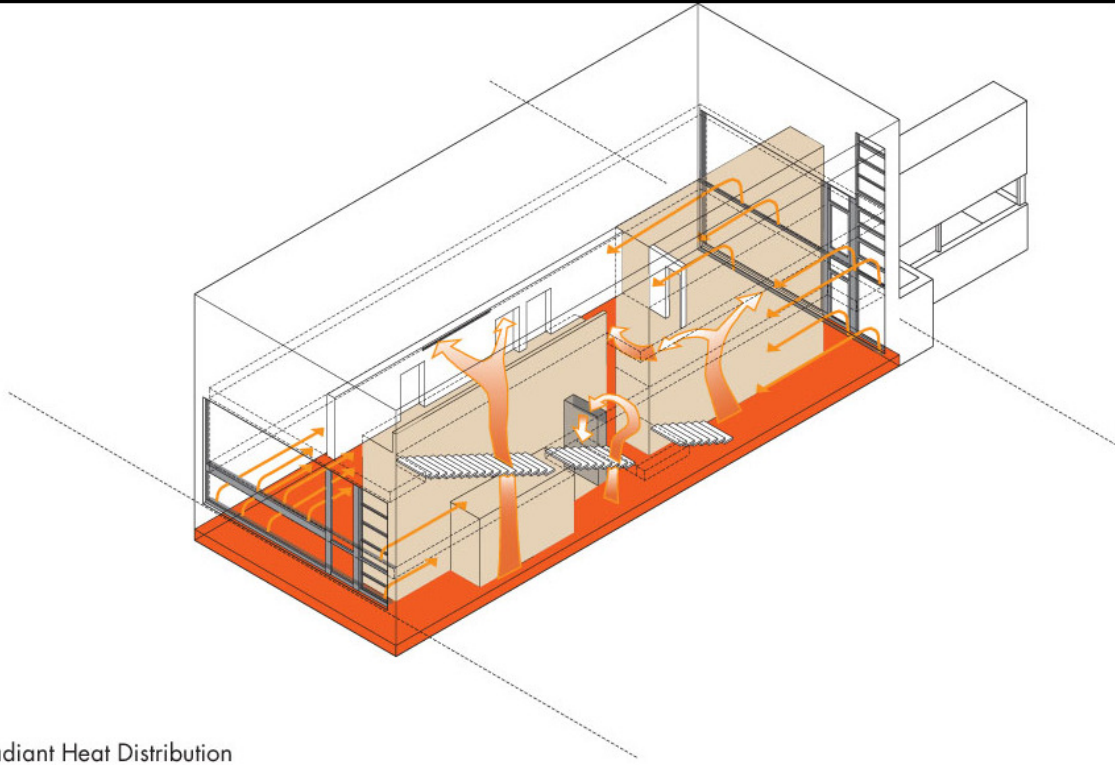
Christopher Barrett / Hedrick Blessing

the wind up



Brad Lynch's floating, open risers create an effect that's at once transparent and opaque.
Christopher Barrett / Hedrick Blessing

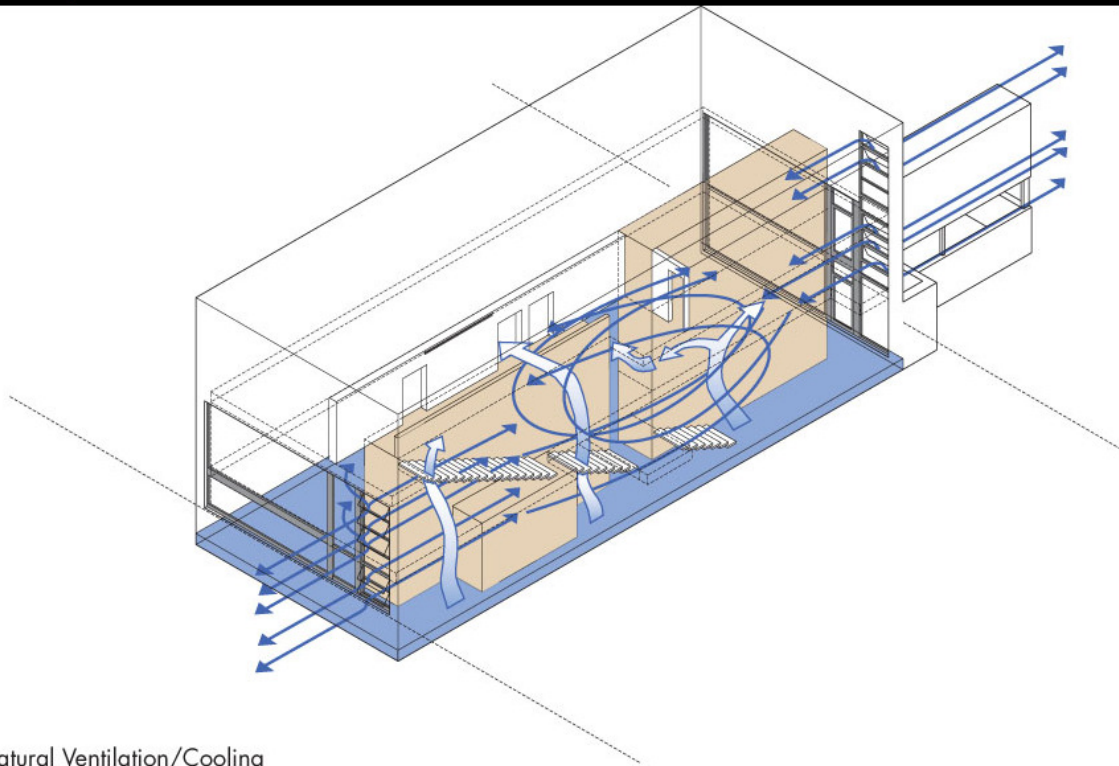
the wind up



Radiant Heat Distribution

Fresh air is funneled throughout the house from operable windows at either end of the stair run.

Brininstool + Lynch



Natural Ventilation/Cooling

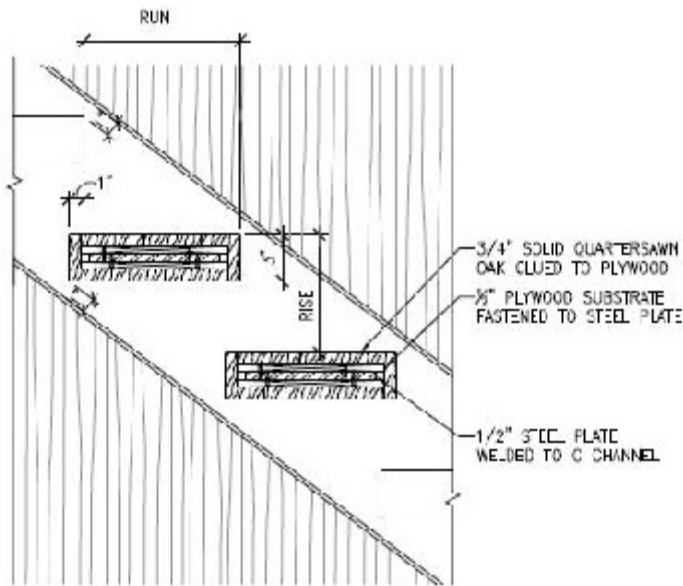
Fresh air is funneled throughout the house from operable windows at either end of the stair run.

Brininstool + Lynch

the wind up

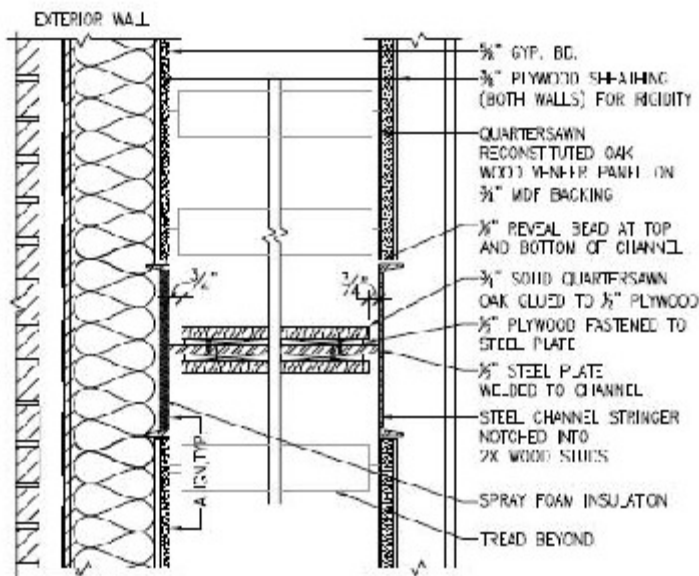


The two main millwork volumes hold items such as kitchen appliances, a bookcase, a vanity, and closets.
Christopher Barrett / Hedrick Blessing



2 SECTION DETAIL- STAIR

TYPE TREAD DETAIL



SECTION DETAIL- STAIR